

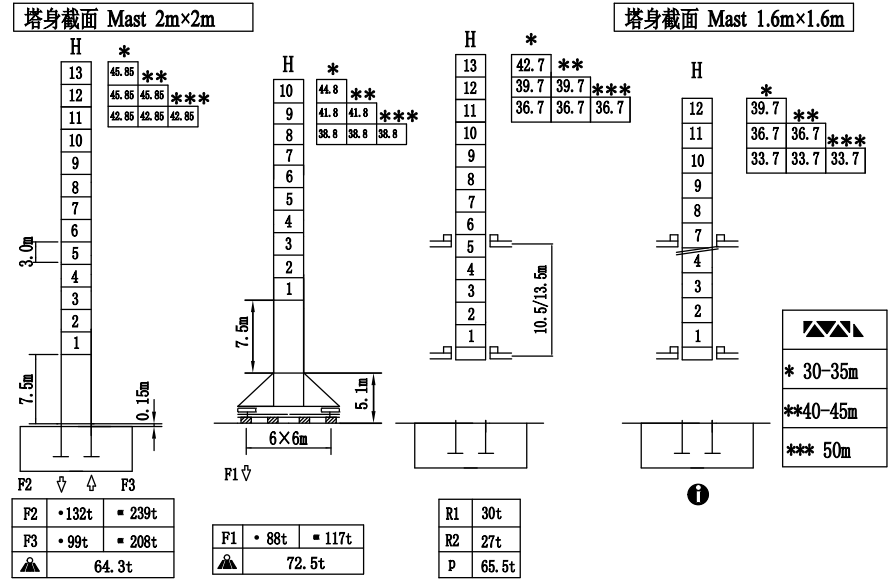
载荷特性 Load diagrams



50m	3.8	20	23	25	28	30	35	40	45	50	m
		10.0	8.7	7.5	6.8	6.0	4.9	4.1	3.5	3.0	t
		5.0	5.0	5.0	5.0	5.0	5.0	4.1	3.5	3.0	t
45m	3.5	20	23	25	28	30	35	40	45	m	
		10.0	9.0	7.0	7.0	6.2	5.1	4.2	3.6	t	
		5.0	5.0	5.0	5.0	5.0	6.0	4.2	3.6	t	
40m	3.2	20	23	25	28	30	35	40	m		
		10.0	9.1	7.8	7.1	6.2	5.1	4.3	t		
		5.0	5.0	5.0	5.0	5.0	5.0	4.3	t		
35m	2.9	20	23	25	28	30	35	m			
		10.0	9.2	8.0	7.2	6.4	5.0	t			
		5.0	5.0	5.0	5.0	5.0	5.0	t			
30m	2.5	20	23	25	28	30	m				
		10.0	9.4	8.1	7.3	6.5	t				
		5.0	5.0	5.0	5.0	5.0	t				

塔身截面 Mast

TCL5030-10



H1、H2、H3分别代表幅度为30m, 40-45m, 50m时臂根铰点高度
 H1、H2、H3 is relatively for the heighe under with a jib radius of 30m,40-45m, 50m.

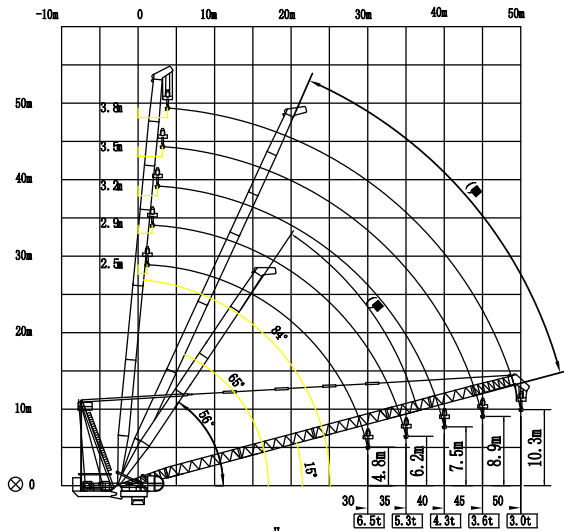
F 反力 Reactions

- 工作状态 in service
- 非工作状态 Out of service

自重 Self-load

- 不帶载荷及配重 Without load and ballast
- 最大臂长及标准高度时的自重 With longest jib and Free standing height

载荷特性 Load diagrams



☛ Weathervaning position 风向标位置
 ⊗ Jib hinge shaft 臂根铰点

附着 Anchorages

